

MEMORIAL PARK.

GYMPIE'S TRIBUTE TO HER BRAVE.

A CITY BEAUTY SPOT.

In most towns of the Commonwealth there is now some lasting memorial in demonstration of the respect and commemoration of the citizens towards the Australians who lost their lives in the service of their country.

In this respect Gympie stands well in the foreground. Seventy-five men from the Gympie and Widgee districts made the great sacrifice, and their memory is preserved in a public and lasting manner by the Memorial park and gates situated in the centre of the city. When the form of the memorial was being considered the members of the family of the late Wm Henderson made an offer of a portion of ground on which the old Union sawmill had stood. The people of Gympie and Widgee, who had combined to erect a suitable memorial to the fallen soldiers, accepted this offer, and adjoining ground was acquired, the area altogether amounting to about five acres.

The undertaking at first appeared to be onerous and difficult, but the scheme was approved of by the people of the districts concerned, and went whole heartedly into its accomplishment. For the completion of the work a considerable sum of money was needed. This was raised by generous donations, and a series of sales and other entertainments, which were supported in a surprisingly enthusiastic manner.

Over £2000 was devoted to the completion of the whole memorial, and in November, 1920, two years after the project was initiated, the Memorial Park was handed over by the Gympie Park committee to the City Council free of debt.

LAYING OUT THE GROUND.

The ground where the park is situated was of an undulating nature, but has now been entirely levelled, the south-eastern end being excavated to the boundary of Young street, to which the ground slopes to a height of about 15ft. On this slope, which extends right along one side of the park, platforms have been left at intervals to hold war trophies. Two are already occupied by German guns taken by Australian soldiers.

The park is triangular in shape, the apex pointing towards Beed street, in a north-westerly direction. It is beautifully laid out, the paths, diverging from the entrance, which are at each corner to the centre of the enclosure, where a pretty and artistically designed bandstand is erected. There several flower beds, which are well looked after, have been laid out, and round the fence and bordering the walks evergreen shrubs and ornamental trees of various kinds have been planted, and are growing exceedingly well.

Since taking over the park the City Council has erected at the southern end a roomy and stoutly built fernery, which will, before long, greatly add to the beauty and usefulness of the grounds. The whole park is enclosed by a substantial wire-netting fence, and iron gates are in position at each entrance. The lawns are level, and planted with couch grass.

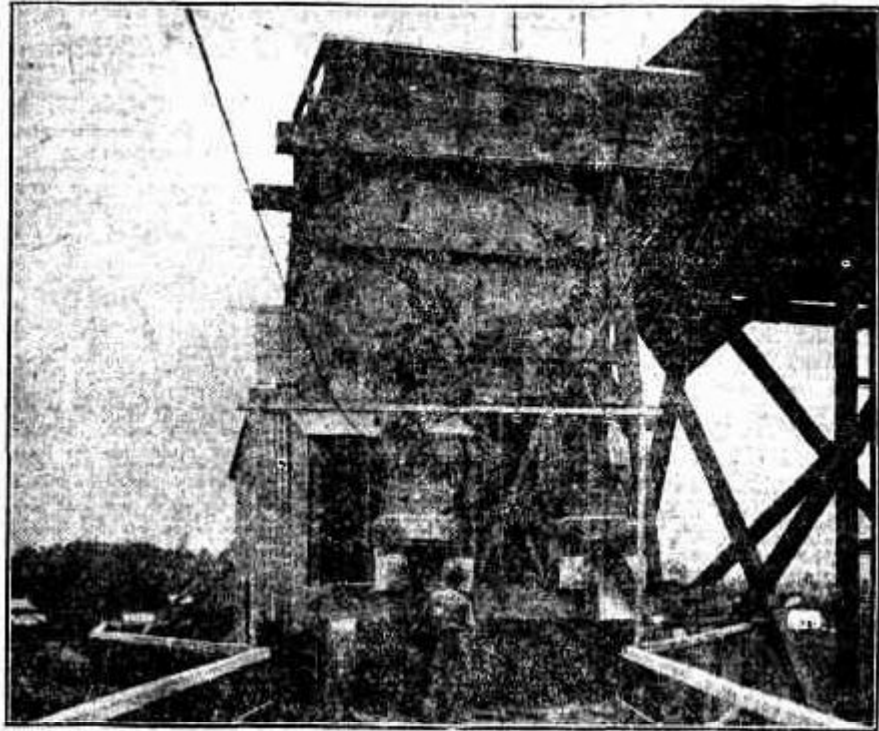
CHEERFUL AND COZY.

As comfortable seats to the number of over 100 are scattered over the grounds, the place is fast becoming a favourite rest resort for the townspeople and country visitors. These seats were all presented to the park by individual residents of the Gympie and Widgee districts. The band stand and the whole area are fitted with electric lights, consequently evening concerts by the local bands are becoming frequent, and add

to the charm of the park as a cheerful and cozy retreat.

Beside the actual park ground, the memorial consists of a carriage entrance leading from Mary street to Beed street, opposite the main park gates. On both sides of this truck are terraced beds of flowering shrubs and evergreens, giving a very pleasing effect. At the opening into Mary street, the main thoroughfare of the city, stand the memorial gates.

a very pleasing effect. At the opening into Mary street, the main thoroughfare of the city, stand the memorial gates. They are of iron, ornamentally worked, supported by four stone pillars, the whole presenting an imposing appearance. On the pillars fronting Mary street are fitted tablets with the names engraved of all the soldiers from the districts of Gympie and Widgee who lost their lives in the European and South African wars. The whole memorial is a fine exemplification of the loving and grateful remembrance cherished by the people of the district for the departed heroes.



CRUSHING PLANT AT THE SCOTTISH GYMPIE MINE.