

BERGER'S MEMORIAL TO SERVICE MEN AND WOMEN.

Unveiled and Dedicated by The Archbishop of
Sydney (The Most Rev. H. W. Mowll, D.D.)

9/12/43.

*"This is our tribute to the
employees of the House of Berger
now serving with His Majesty's Forces . . .
whether they be fighting in the
storm-wracked skies of Europe,
advancing in the treacherous jungles
of New Guinea, training in
the dusty camps of Australia, or
facing the perils of the Seven Seas.*

*Nor do we forget our girls doing their
part in the W.A.A.A.F., the A.W.A.S.
and the Women's Land Army.*

*Here are their names, each and every one,
engraved not just in metal,
but in our proud and grateful hearts."*

These words were on the front page of a brochure issued by Lewis Berger & Sons (Aust.) Pty. Ltd. at the commemoration ceremony in connection with the unveiling of "The Garden of Honor" that now adorns the grounds at their works. They are a fitting tribute from the firm and fellow workers of those being honored.

The Memorial is a Sundial designed by Hennessy Hennessy & Company and executed by Robert Wall & Sons Pty. Ltd.

Fashioned in Hawkesbury Sandstone, bronze and copper and crowned with a sundial, it bears the inscription "And Time Shall Increase the Glory of Their Fame." Incised on the dome-shaped topstone is the Berger "sunburst" motif and engraved copper plates bearing the names of employees from all States serving with His Majesty's Forces.

It was necessary to specially design the sundial to ensure that the correct time is recorded at its Rhodes origin. An important bearing on the trigonometrical formula which determines the calibra-

onomometrical formula which determines the calibration of a sundial face is the latitude and longitude—the latitude accepted for the Berger Works is 33 degrees 50 minutes 20 seconds and the longitude 151 degrees .05 minutes.

The Gnomon (this is the extruded arm on the dial face) is held at the latitude angle by the bronze figure of Mercury, which is the ancient trade mark of the House of Berger. This Gnomon is set True North and not Magnetic North.

The shadow cast by the Gnomon marks the sun time and an adjustment is necessary to obtain the reading for Eastern Standard Time. This is easily calculated from the adjusting scale on the dial. For instance, if the date is December 9, thirteen minutes must be subtracted from the sun time, whereas if it is January 8, two minutes must be added for Eastern Standard Time.

The ceremony was attended by over three hundred people who were welcomed by Mr. J. A. Young, Managing Director, who said—

“History teaches us that no two wars are alike. Circumstances of this war differ from those of any other because of greater contrasts in conditions under which our men and women may be called upon to serve. Thus it is inappropriate to attempt to measure, neither is it wise to try to compare, the extent of their sacrifice, because once in the Services men or women must go where they are sent and carry out the work entrusted to them.

“One thing is common to them all, however, inasmuch as they have set aside all normal pursuits and ambitions and, for the time being, have sacrificed their civil rights and the sanctity of their home life. For this reason the names of all of the Company's employees have been included on the Shrine, such names representing men and women from Head Office and from Branches at Melbourne, Adelaide and Perth. At this date there are 302 such names, and to all whom they represent we pay our homage and respect.

“Up to the present casualties amongst our people have been comparatively few. Some we know

have been comparatively few. Some we know have fallen, some are prisoners of war and the fate of others, reported "missing," is still unknown. To parents and loved ones of these men, and particularly to those who watch and wait for news which does not come, we tender our deep sympathy and understanding."

NEW GUINEA TIMBERS.

The Division of Forest Products has recently prepared preliminary notes on some timber species of Papua and New Guinea, with descriptions and methods of identification. Being in mimeographed form, few copies are available for general distribution.

The notes were compiled from various sources to enable those with some slight knowledge of trees and timber to identify and use those timbers likely to be of value for various purposes. Complete information on the timber species of the area is sparse. It has been found that a number of the species common in New Guinea and Papua, or at least closely related species, occur in various localities throughout Micronesia. It has therefore been possible to review information available on such species in publications dealing with the timbers of Malaya, Dutch East Indies, Philippines, Solomon Islands, and the Japanese Caroline and Marianne Islands. By this means a considerable amount of information has been built up concerning timber species occurring in the New Guinea region.

The greatest difficulty has been in obtaining information on uses, and here again assistance has been derived from the description of properties and uses of a related species and the information applied tentatively to the species in question. Most of the timbers included have been used by generations of the native population. Some information has been gleaned from this source but it must be remembered that such uses are naturally restricted, and additional knowledge can only be gained by comparison with known timbers and methods of trial and error.

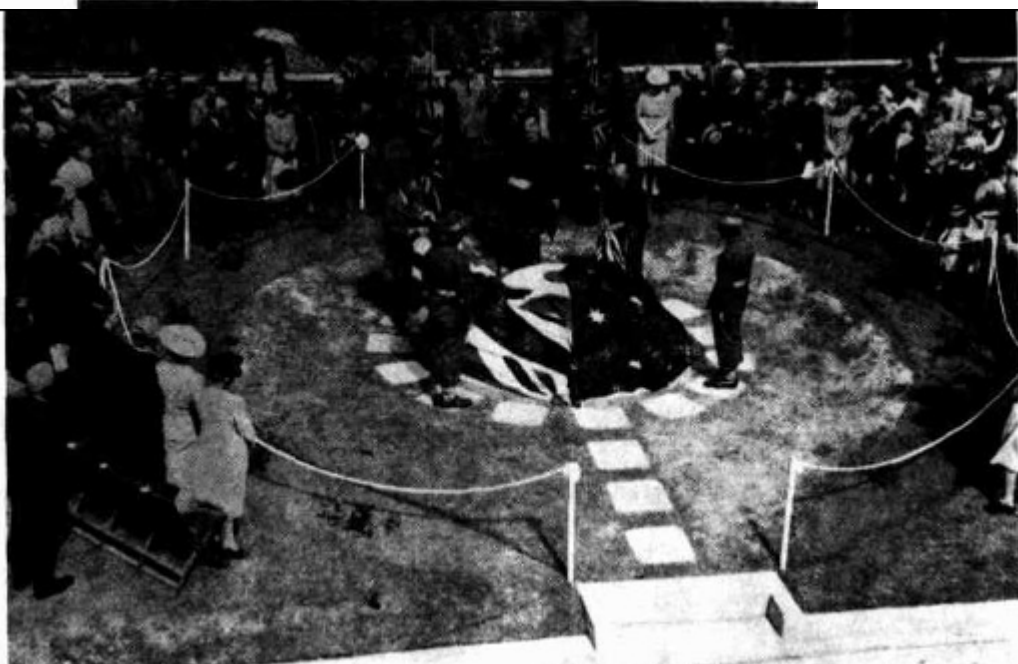
A table has been drawn up summarizing the occurrence of each species in the various districts of New Guinea and Papua, and a map has been included to serve as a reference for the districts

NEW Guinea and Japan, and a map has been included to serve as a reference for the districts mentioned.

—C.S.I.R. Journal.



Sundial to commemorate Service Men and Women fighting for the country and the employees of Berger & Sons (Aust.) Pty. Ltd.





**BERGER'S "GARDEN OF HONOR."
The Unveiling Ceremony.**